

fuma // ROUND – ROUND EDGE PROFILES
 Stainless steel, Aluminum or PVC

// APPLICATION

Round edge profiles (closed) from fuma-Bautec were developed as a handsome edging profile for the corners of external walls. They are smoothly rounded and available in a variety of materials. Aside from their protective function, they can also be used for attractive design purposes. They are also suitable for use as a covering as skirting for tiled or carpeted, parquet or natural stone floors. High-quality formed pieces are available for joining profile sections together.

// MATERIAL

C-shaped profiles are available in the following materials:

- **anodized aluminum, high-gloss anodized aluminum, color coated and texture coated aluminum**
- **stainless steel in surfaces glossy, brushed and chrome-plated high gloss**
- **hard PVC (no emollients)**

Aluminum round edge profiles can be in any location where the environment is not expected to be too tough. To avoid staining (corrosion) of the profile surface care must be taken with cement materials. Since aluminum is sensitive to alkaline substances, any residues from mortar, tile adhesive or grout should be wiped from visible surfaces immediately. The profiles should be fully embedded in the adhesive layer. This prevents the creation of any pockets in which alkaline water solutions could collect (especially in areas where there is a lot of water present). Anodized aluminum profiles are specially treated so that surfaces should not normally change. Visible surfaces, though, must nevertheless be protected from all cement materials. Damage can also occur due to grating or abrasive grout or other objects.

Round edge profiles made of stainless steel are the ideal choice for sophisticated and appealing entrance areas. They also meet the highest requirements with regard to mechanical loading.

Stainless steel profiles are used not only in homes, but in the food industry, hospitals, swimming pools, breweries and other applications where particularly exacting requirements must be met with regard to cleanliness, hygiene, resilience and chemical resistance. Note: Depending on the type and extent of chemical exposure, the use of type 1.4404 (316L) stainless steel is recommended.

PVC profiles offer a wide range of colours and can thus be perfectly matched to the colours of the tiling. N.B.: The use of coloured mortar with ultra fine colour pigments in conjunction with plastic profiles may result in permanent staining of the profiles. We recommend taking appropriate protective measures as a precaution.

Round edge-corner pieces provide a neat and technically accomplished solution for inside and outside corners, without having to cut and mitre the profiles. Use of the appropriate corner pieces even makes it possible to design corners in all three dimensions. For all products and materials, the following applies: The suitability of the material with regard to the expected mechanical loading and chemical exposure must be investigated carefully in each individual case. The generally recognised rules of good engineering practice must always be observed!

// INSTALLATION

1. Select the round edge profiles appropriate to the tile thickness.
2. Apply tile adhesive with a serrated trowel.
3. Press the round edge profiles into the adhesive bed and align them correctly.
4. Trowel over the attachment base.
5. Press the tiles in firmly and align them in such a way that they are flush with the surface of the profiles.
Lay tiles across the entire surface.
6. Use the matching inside and outside corner pieces.
7. Allow a gap of about 2-3 mm between the tiles and profile.
8. Fill the gap between the tiles and profile with grout.

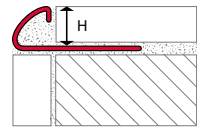
// MAINTENANCE

Round edge profiles do not require any special care. They can easily be cleaned when necessary using clear, clean water with a few drops of washing up liquid. Cleaning agents must specifically be free of hydrochloric or fluoridic acid and must not be abrasive. No cleaning agents containing solvents may be used in conjunction with PVC profiles. Observe the manufacturers' own maintenance instructions.

Note:

The correct application of our products is not subject to our control. A warranty can therefore only be given for the quality of our products within the framework of our sales and delivery conditions, but not for successful processing. We reserve the right to make changes. Details which go beyond the contents of this data sheet require written confirmation.

For further information, please refer to the currently valid general catalog.



fuma // ROUND - ROUND EDGE PROFILES
Stainless steel 1.4301/304, with corner pieces

Length: 2.50 m

Height in mm	Item no.
6.0	FEV 060-250
8.0	FEV 080-250
10.0	FEV 100-250
11.0	FEV 110-250
12.5	FEV 125-250

Length: 3.00 m

Height in mm	Item no.
6.0	FEV 060-300
8.0	FEV 080-300
10.0	FEV 100-300
11.0	FEV 110-300
12.5	FEV 125-300

glossy



External corners

Height in mm	Item no.
6.0	E-FEV 060
8.0	E-FEV 080
10.0	E-FEV 100
11.0	E-FEV 110
12.5	E-FEV 125

Internal corners

Height in mm	Item no.
6.0	I-FEV 060
8.0	I-FEV 080
10.0	I-FEV 100
11.0	I-FEV 110
12.5	I-FEV 125



External corners - Metal die-cast

Height in mm	Item no.
-	-
8.0	E-FIV 080
10.0	E-FIV 100
11.0	E-FIV 110
12.5	E-FIV 125

Internal corners - Metal die-cast

Height in mm	Item no.
-	-
8.0	I-FIV 080
10.0	I-FIV 100
11.0	I-FIV 110
12.5	I-FIV 125

Metal die-cast



Length: 2.50 m

Height in mm	Item no.
6.0	FEVS 060-250
8.0	FEVS 080-250
10.0	FEVS 100-250
11.0	FEVS 110-250
12.5	FEVS 125-250

Length: 3.00 m

Height in mm	Item no.
6.0	FEVS 060-300
8.0	FEVS 080-300
10.0	FEVS 100-300
11.0	FEVS 110-300
12.5	FEVS 125-300

brushed



External corners

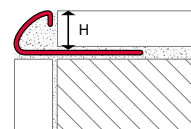
Height in mm	Item no.
6.0	E-FEVS 060
8.0	E-FEVS 080
10.0	E-FEVS 100
11.0	E-FEVS 110
12.5	E-FEVS 125

Internal corners

Height in mm	Item no.
6.0	I-FEVS 060
8.0	I-FEVS 080
10.0	I-FEVS 100
11.0	I-FEVS 110
12.5	I-FEVS 125



→ More surfaces on the next page.



fuma // ROUND - ROUND EDGE PROFILES
Stainless steel 1.4301/304, with corner pieces

Length: 2.50 m

Height in mm	Item no.
8.0	FEVC 080-250
10.0	FEVC 100-250
11.0	FEVC 110-250
12.5	FEVC 125-250

chrome
glossy



External corners

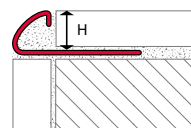
Height in mm	Item no.
8.0	E-FEVC 080
10.0	E-FEVC 100
11.0	E-FEVC 110
12.5	E-FEVC 125

Internal corners

Height in mm	Item no.
8.0	I-FEVC 080
10.0	I-FEVC 100
11.0	I-FEVC 110
12.5	I-FEVC 125



fuma // ROUND - ROUND EDGE PROFILES
Stainless steel 1.4404/316L, with corner pieces



316L

Length: 2.50 m

Height in mm	Item no.
8.0	FEV 080 V4A-250
10.0	FEV 100 V4A-250

glossy



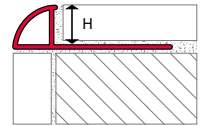
External corners

Height in mm	Item no.
8.0	E-FEV 080 V4A
10.0	E-FEV 100 V4A

Internal corners

Height in mm	Item no.
8.0	I-FEV 080 V4A
10.0	I-FEV 100 V4A





fuma // ROUND - ROUND EDGE PROFILES
Aluminum, with corner pieces

Length: 2.50 m

Height in mm	Item no.
6.0	FVGS 060-250
8.0	FVGS 080-250
10.0	FVGS 100-250
12.5	FVGS 125-250

Length: 3.00 m

Height in mm	Item no.
6.0	FVGS 060-300
8.0	FVGS 080-300
10.0	FVGS 100-300
12.5	FVGS 125-300

silver anodized



External corners

Height in mm	Item no.
6.0	E-FVGS 060
8.0	E-FVGS 080
10.0	E-FVGS 100
12.5	E-FVGS 125

Internal corners

Height in mm	Item no.
6.0	I-FVGS 060
8.0	I-FVGS 080
10.0	I-FVGS 100
12.5	I-FVGS 125



Length: 2.50 m

Height in mm	Item no.
6.0	FVGC 060-250
8.0	FVGC 080-250
10.0	FVGC 100-250
12.5	FVGC 125-250

silver high-gloss anodized



External corners

Height in mm	Item no.
6.0	E-FVGC 060
8.0	E-FVGC 080
10.0	E-FVGC 100
12.5	E-FVGC 125

Internal corners

Height in mm	Item no.
6.0	I-FVGC 060
8.0	I-FVGC 080
10.0	I-FVGC 100
12.5	I-FVGC 125



Length: 2.50 m

Height in mm	Item no.
8.0	FVHS 080-250
10.0	FVHS 100-250
12.5	FVHS 125-250

silver high-gloss anodized brushed



External corners

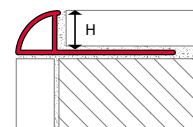
Height in mm	Item no.
8.0	E-FVHS 080
10.0	E-FVHS 100
12.5	E-FVHS 125

Internal corners

Height in mm	Item no.
8.0	I-FVHS 080
10.0	I-FVHS 100
12.5	I-FVHS 125



→ More surfaces on the next page.



fuma // ROUND - ROUND EDGE PROFILES
 Aluminum, with corner pieces

Length: 2.50 m

Height in mm	Item no.
8.0	FVGT 080-250
10.0	FVGT 100-250
12.5	FVGT 125-250

titanium anodized



External corners

Height in mm	Item no.
8.0	E-FVGT 080
10.0	E-FVGT 100
12.5	E-FVGT 125

Internal corners

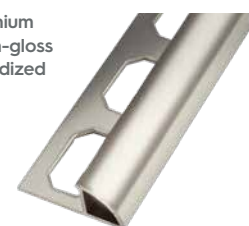
Height in mm	Item no.
8.0	I-FVGT 080
10.0	I-FVGT 100
12.5	I-FVGT 125



Length: 2.50 m

Height in mm	Item no.
8.0	FVTH 080-250
10.0	FVTH 100-250
12.5	FVTH 125-250

titanium high-gloss anodized



External corners

Height in mm	Item no.
8.0	E-FVTH 080
10.0	E-FVTH 100
12.5	E-FVTH 125

Internal corners

Height in mm	Item no.
8.0	I-FVTH 080
10.0	I-FVTH 100
12.5	I-FVTH 125



Length: 2.50 m

Height in mm	Item no.
8.0	FVTS 080-250
10.0	FVTS 100-250
12.5	FVTS 125-250

titanium high-gloss anodized brushed



External corners

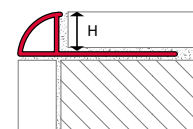
Height in mm	Item no.
8.0	E-FVTS 080
10.0	E-FVTS 100
12.5	E-FVTS 125

Internal corners

Height in mm	Item no.
8.0	I-FVTS 080
10.0	I-FVTS 100
12.5	I-FVTS 125



→ More surfaces on the next page.



fuma // ROUND - ROUND EDGE PROFILES
 Aluminum, with corner pieces

Length: 2.50 m

Height in mm	Item no.
100	FVAE 100-M-250
125	FVAE 125-M-250

External corners

Height in mm	Item no.
100	E-FVAE 100-M
125	E-FVAE 125-M

Internal corners

Height in mm	Item no.
100	I-FVAE 100-M
125	I-FVAE 125-M

brass
anodized



Length: 2.50 m

Height in mm	Item no.
100	FVAE 100-SWG-250
125	FVAE 125-SWG-250

External corners

Height in mm	Item no.
100	E-FVAE 100-SWG
125	E-FVAE 125-SWG

Internal corners

Height in mm	Item no.
100	I-FVAE 100-SWG
125	I-FVAE 125-SWG

black
high-gloss
anodized



Length: 2.50 m

Height in mm	Item no.
100	FVAE 100-SWS-250
125	FVAE 125-SWS-250

External corners

Height in mm	Item no.
100	E-FVAE 100-SWS
125	E-FVAE 125-SWS

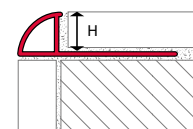
Internal corners

Height in mm	Item no.
100	I-FVAE 100-SWS
125	I-FVAE 125-SWS

black
high-gloss
anodized
brushed



→ More surfaces
on the next page.



fuma // ROUND - ROUND EDGE PROFILES
 Aluminum, with corner pieces

Length: 2.50 m

Height in mm	Item no.
100	FVAE 100-BS-250
125	FVAE 125-BS-250

External corners

Height in mm	Item no.
100	E-FVAE 100-BS
125	E-FVAE 125-BS

Internal corners

Height in mm	Item no.
100	I-FVAE 100-BS
125	I-FVAE 125-BS



bronze anodized brushed



Length: 2.50 m

Height in mm	Item no.
100	FVAE 100-KGS-250
125	FVAE 125-KGS-250

External corners

Height in mm	Item no.
100	E-FVAE 100-KGS
125	E-FVAE 125-KGS

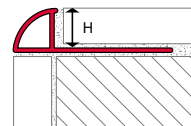
Internal corners

Height in mm	Item no.
100	I-FVAE 100-KGS
125	I-FVAE 125-KGS



copper high-gloss anodized brushed





fuma // ROUND - ROUND EDGE PROFILES
 Aluminum color coated, with corner pieces

Length: 2.50 m

Height in mm	Item no.
8.0	FVGP 080-BW-250
10.0	FVGP 100-BW-250
12.5	FVGP 125-BW-250

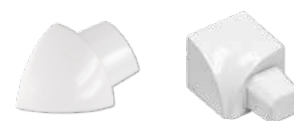
External corners

Height in mm	Item no.
8.0	E-FVGP 080-BW
10.0	E-FVGP 100-BW
12.5	E-FVGP 125-BW

Internal corners

Height in mm	Item no.
8.0	I-FVGP 080-BW
10.0	I-FVGP 100-BW
12.5	I-FVGP 125-BW

brilliant white



Length: 2.50 m

Height in mm	Item no.
8.0	FVGP 080-SG-250
10.0	FVGP 100-SG-250
12.5	FVGP 125-SG-250

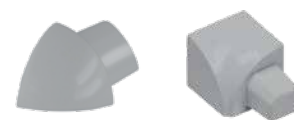
External corners

Height in mm	Item no.
8.0	E-FVGP 080-SG
10.0	E-FVGP 100-SG
12.5	E-FVGP 125-SG

Internal corners

Height in mm	Item no.
8.0	I-FVGP 080-SG
10.0	I-FVGP 100-SG
12.5	I-FVGP 125-SG

silver grey



Length: 2.50 m

Height in mm	Item no.
8.0	FVGP 080-BB-250
10.0	FVGP 100-BB-250
12.5	FVGP 125-BB-250

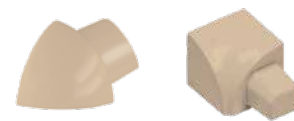
External corners

Height in mm	Item no.
8.0	E-FVGP 080-BB
10.0	E-FVGP 100-BB
12.5	E-FVGP 125-BB

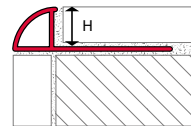
Internal corners

Height in mm	Item no.
8.0	I-FVGP 080-BB
10.0	I-FVGP 100-BB
12.5	I-FVGP 125-BB

bahamabeige



→ More colors on the next page.



fuma // ROUND - ROUND EDGE PROFILES
 Aluminum color coated, with corner pieces

Length: 2.50 m

Height in mm	Item no.
8.0	FVGP 080-CA-250
10.0	FVGP 100-CA-250
12.5	FVGP 125-CA-250

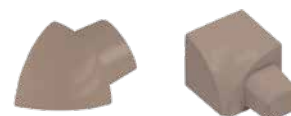
External corners

Height in mm	Item no.
8.0	E-FVGP 080-CA
10.0	E-FVGP 100-CA
12.5	E-FVGP 125-CA

Internal corners

Height in mm	Item no.
8.0	I-FVGP 080-CA
10.0	I-FVGP 100-CA
12.5	I-FVGP 125-CA

caramel



Length: 2.50 m

Height in mm	Item no.
8.0	FVGP 080-AG-250
10.0	FVGP 100-AG-250
12.5	FVGP 125-AG-250

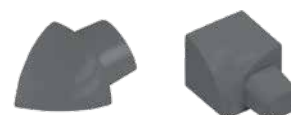
External corners

Height in mm	Item no.
8.0	E-FVGP 080-AG
10.0	E-FVGP 100-AG
12.5	E-FVGP 125-AG

Internal corners

Height in mm	Item no.
8.0	I-FVGP 080-AG
10.0	I-FVGP 100-AG
12.5	I-FVGP 125-AG

ash grey



Length: 2.50 m

Height in mm	Item no.
8.0	FVGP 080-MHG-250
10.0	FVGP 100-MHG-250
12.5	FVGP 125-MHG-250

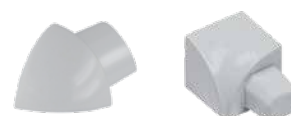
External corners

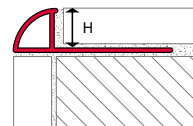
Height in mm	Item no.
8.0	E-FVGP 080-MHG
10.0	E-FVGP 100-MHG
12.5	E-FVGP 125-MHG

Internal corners

Height in mm	Item no.
8.0	I-FVGP 080-MHG
10.0	I-FVGP 100-MHG
12.5	I-FVGP 125-MHG

manhattan grey





fuma // ROUND - ROUND EDGE PROFILES
 Aluminum texture coated, with corner pieces

Length: 2.50 m

Height in mm	Item no.
8.0	FVGP 080-GM-250
10.0	FVGP 100-GM-250
12.5	FVGP 125-GM-250

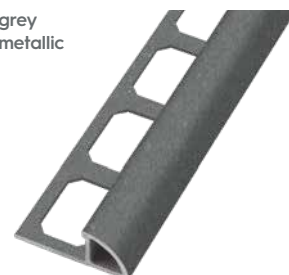
External corners

Height in mm	Item no.
8.0	E-FVGP 080-GM
10.0	E-FVGP 100-GM
12.5	E-FVGP 125-GM

Internal corners

Height in mm	Item no.
8.0	I-FVGP 080-GM
10.0	I-FVGP 100-GM
12.5	I-FVGP 125-GM

grey metallic



Length: 2.50 m

Height in mm	Item no.
8.0	FVGP 080-AT-250
10.0	FVGP 100-AT-250
12.5	FVGP 125-AT-250

External corners

Height in mm	Item no.
8.0	E-FVGP 080-AT
10.0	E-FVGP 100-AT
12.5	E-FVGP 125-AT

Internal corners

Height in mm	Item no.
8.0	I-FVGP 080-AT
10.0	I-FVGP 100-AT
12.5	I-FVGP 125-AT

anthracite



Length: 2.50 m

Height in mm	Item no.
8.0	FVGP 080-TB-250
10.0	FVGP 100-TB-250
12.5	FVGP 125-TB-250

External corners

Height in mm	Item no.
8.0	E-FVGP 080-TB
10.0	E-FVGP 100-TB
12.5	E-FVGP 125-TB

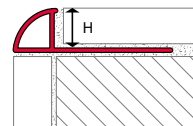
Internal corners

Height in mm	Item no.
8.0	I-FVGP 080-TB
10.0	I-FVGP 100-TB
12.5	I-FVGP 125-TB

terra brown



→ More surfaces on the next page.



fuma // ROUND - ROUND EDGE PROFILES
 Aluminum texture coated, with corner pieces

Length: 2.50 m

Height in mm	Item no.
8.0	FVGP 080-UB-250
10.0	FVGP 100-UB-250
12.5	FVGP 125-UB-250

External corners

Height in mm	Item no.
8.0	E-FVGP 080-UB
10.0	E-FVGP 100-UB
12.5	E-FVGP 125-UB

Internal corners

Height in mm	Item no.
8.0	I-FVGP 080-UB
10.0	I-FVGP 100-UB
12.5	I-FVGP 125-UB

umbra



Length: 2.50 m

Height in mm	Item no.
8.0	FVGP 080-QZ-250
10.0	FVGP 100-QZ-250
12.5	FVGP 125-QZ-250

External corners

Height in mm	Item no.
8.0	E-FVGP 080-QZ
10.0	E-FVGP 100-QZ
12.5	E-FVGP 125-QZ

Internal corners

Height in mm	Item no.
8.0	I-FVGP 080-QZ
10.0	I-FVGP 100-QZ
12.5	I-FVGP 125-QZ

quarz



Length: 2.50 m

Height in mm	Item no.
8.0	FVGP 080-SD-250
10.0	FVGP 100-SD-250
12.5	FVGP 125-SD-250

External corners

Height in mm	Item no.
8.0	E-FVGP 080-SD
10.0	E-FVGP 100-SD
12.5	E-FVGP 125-SD

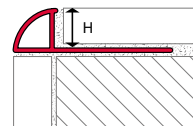
Internal corners

Height in mm	Item no.
8.0	I-FVGP 080-SD
10.0	I-FVGP 100-SD
12.5	I-FVGP 125-SD

sand



→ More surfaces on the next page.



fuma // ROUND - ROUND EDGE PROFILES
 Aluminum texture coated, with corner pieces

Length: 2.50 m

Height in mm	Item no.
8.0	FVGP 080-DL-250
10.0	FVGP 100-DL-250
12.5	FVGP 125-DL-250

External corners

Height in mm	Item no.
8.0	E-FVGP 080-DL
10.0	E-FVGP 100-DL
12.5	E-FVGP 125-DL

Internal corners

Height in mm	Item no.
8.0	I-FVGP 080-DL
10.0	I-FVGP 100-DL
12.5	I-FVGP 125-DL

dolomite



Length: 2.50 m

Height in mm	Item no.
8.0	FVGP 080-ARC-250
10.0	FVGP 100-ARC-250
12.5	FVGP 125-ARC-250

External corners

Height in mm	Item no.
8.0	E-FVGP 080-ARC
10.0	E-FVGP 100-ARC
12.5	E-FVGP 125-ARC

Internal corners

Height in mm	Item no.
8.0	I-FVGP 080-ARC
10.0	I-FVGP 100-ARC
12.5	I-FVGP 125-ARC

arctic



Length: 2.50 m

Height in mm	Item no.
8.0	FVGP 080-KRD-250
10.0	FVGP 100-KRD-250
12.5	FVGP 125-KRD-250

External corners

Height in mm	Item no.
8.0	E-FVGP 080-KRD
10.0	E-FVGP 100-KRD
12.5	E-FVGP 125-KRD

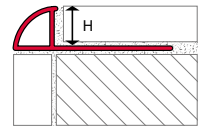
Internal corners

Height in mm	Item no.
8.0	I-FVGP 080-KRD
10.0	I-FVGP 100-KRD
12.5	I-FVGP 125-KRD

chalk



→ More surfaces on the next page.



fuma // ROUND - ROUND EDGE PROFILES
 Aluminum texture coated, with corner pieces

Length: 2.50 m

Height in mm	Item no.
8.0	FVGP 080-CR-250
10.0	FVGP 100-CR-250
12.5	FVGP 125-CR-250

External corners

Height in mm	Item no.
8.0	E-FVGP 080-CR
10.0	E-FVGP 100-CR
12.5	E-FVGP 125-CR

Internal corners

Height in mm	Item no.
8.0	I-FVGP 080-CR
10.0	I-FVGP 100-CR
12.5	I-FVGP 125-CR

creme



Length: 2.50 m

Height in mm	Item no.
8.0	FVGP 080-MSW-250
10.0	FVGP 100-MSW-250
12.5	FVGP 125-MSW-250

External corners

Height in mm	Item no.
8.0	E-FVGP 080-MSW
10.0	E-FVGP 100-MSW
12.5	E-FVGP 125-MSW

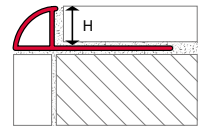
Internal corners

Height in mm	Item no.
8.0	I-FVGP 080-MSW
10.0	I-FVGP 100-MSW
12.5	I-FVGP 125-MSW

black



→ More surfaces on the next page.



fuma // ROUND - ROUND EDGE PROFILES
 Aluminum texture coated, with corner pieces

Length: 2.50 m

Height in mm	Item no.
8.0	FVGP 080-SWB-250
10.0	FVGP 100-SWB-250
12.5	FVGP 125-SWB-250

External corners

Height in mm	Item no.
8.0	E-FVGP 080-SWB
10.0	E-FVGP 100-SWB
12.5	E-FVGP 125-SWB

Internal corners

Height in mm	Item no.
8.0	I-FVGP 080-SWB
10.0	I-FVGP 100-SWB
12.5	I-FVGP 125-SWB



black brilliant



Length: 2.50 m

Height in mm	Item no.
8.0	FVGP 080-ATB-250
10.0	FVGP 100-ATB-250
12.5	FVGP 125-ATB-250

External corners

Height in mm	Item no.
8.0	E-FVGP 080-ATB
10.0	E-FVGP 100-ATB
12.5	E-FVGP 125-ATB

Internal corners

Height in mm	Item no.
8.0	I-FVGP 080-ATB
10.0	I-FVGP 100-ATB
12.5	I-FVGP 125-ATB



anthracite brilliant



Length: 2.50 m

Height in mm	Item no.
8.0	FVGP 080-SGB-250
10.0	FVGP 100-SGB-250
12.5	FVGP 125-SGB-250

External corners

Height in mm	Item no.
8.0	E-FVGP 080-SGB
10.0	E-FVGP 100-SGB
12.5	E-FVGP 125-SGB

Internal corners

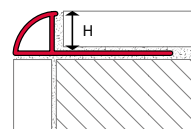
Height in mm	Item no.
8.0	I-FVGP 080-SGB
10.0	I-FVGP 100-SGB
12.5	I-FVGP 125-SGB



silver grey brilliant



→ More surfaces on the next page.



fuma // ROUND - ROUND EDGE PROFILES
 Aluminum texture coated, with corner pieces

Length: 2.50 m

Height in mm	Item no.
8.0	FVGP 080-BGB-250
10.0	FVGP 100-BGB-250
12.5	FVGP 125-BGB-250

External corners

Height in mm	Item no.
8.0	E-FVGP 080-BGB
10.0	E-FVGP 100-BGB
12.5	E-FVGP 125-BGB

Internal corners

Height in mm	Item no.
8.0	I-FVGP 080-BGB
10.0	I-FVGP 100-BGB
12.5	I-FVGP 125-BGB



Length: 2.50 m

Height in mm	Item no.
8.0	FVGP 080-WB-250
10.0	FVGP 100-WB-250
12.5	FVGP 125-WB-250

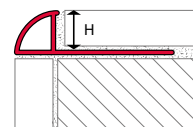
External corners

Height in mm	Item no.
8.0	E-FVGP 080-WB
10.0	E-FVGP 100-WB
12.5	E-FVGP 125-WB

Internal corners

Height in mm	Item no.
8.0	I-FVGP 080-WB
10.0	I-FVGP 100-WB
12.5	I-FVGP 125-WB





fuma // ROUND - ROUND EDGE PROFILES

PVC, with corner pieces

Length: 2.50 m

Height in mm	Item no.
6.0	FVG 060-BW-250
8.0	FVG 080-BW-250
10.0	FVG 100-BW-250
12.5	FVG 125-BW-250

Length: 3.00 m

Height in mm	Item no.
6.0	FVG 060-BW-300
8.0	FVG 080-BW-300
10.0	FVG 100-BW-300
12.5	FVG 125-BW-300

brilliant white



External corners

Height in mm	Item no.
6.0	E-FVG 060-BW
8.0	E-FVG 080-BW
10.0	E-FVG 100-BW
12.5	E-FVG 125-BW



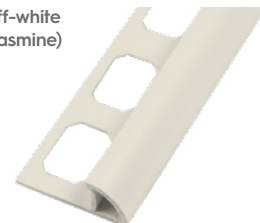
Length: 2.50 m

Height in mm	Item no.
8.0	FVG 080-AW-250
10.0	FVG 100-AW-250
12.5	FVG 125-AW-250

Length: 3.00 m

Height in mm	Item no.
8.0	FVG 080-AW-300
10.0	FVG 100-AW-300
12.5	FVG 125-AW-300

off-white (jasmine)



External corners

Height in mm	Item no.
8.0	E-FVG 080-AW
10.0	E-FVG 100-AW
12.5	E-FVG 125-AW



Length: 2.50 m

Height in mm	Item no.
8.0	FVG 080-SG-250
10.0	FVG 100-SG-250
12.5	FVG 125-SG-250

silver grey

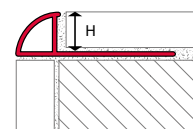


External corners

Height in mm	Item no.
8.0	E-FVG 080-SG
10.0	E-FVG 100-SG
12.5	E-FVG 125-SG



→ More colors on the next page.



fuma // ROUND - ROUND EDGE PROFILES

PVC, with corner pieces

Length: 2.50 m

Height in mm	Item no.
8.0	FVG 080-CA-250
10.0	FVG 100-CA-250
12.5	FVG 125-CA-250

External corners

Height in mm	Item no.
8.0	E-FVG 080-CA
10.0	E-FVG 100-CA
12.5	E-FVG 125-CA

caramel



Length: 2.50 m

Height in mm	Item no.
8.0	FVG 080-PG-250
10.0	FVG 100-PG-250
12.5	FVG 125-PG-250

External corners

Height in mm	Item no.
8.0	E-FVG 080-PG
10.0	E-FVG 100-PG
12.5	E-FVG 125-PG

pergamon



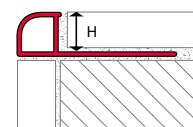
Length: 2.50 m

Height in mm	Item no.
8.0	FVG 080-SW-250
10.0	FVG 100-SW-250
12.5	FVG 125-SW-250

External corners

Height in mm	Item no.
8.0	E-FVG 080-SW
10.0	E-FVG 100-SW
12.5	E-FVG 125-SW

black



fuma // ROND - ROUND PROFILES

PVC, with corner pieces

Length: 2.50 m

Height in mm	Item no.
8.0	FRO 080-BW-250
10.0	FRO 100-BW-250
12.5	FRO 125-BW-250

Length: 3.00 m

Height in mm	Item no.
8.0	FRO 080-BW-300
10.0	FRO 100-BW-300
12.5	FRO 125-BW-300

brilliant white



External corners

Height in mm	Item no.
8.0	E-FRO 080-BW
10.0	E-FRO 100-BW
12.5	E-FRO 125-BW

Internal corners

Height in mm	Item no.
8.0	I-FRO 080-BW
10.0	I-FRO 100-BW
12.5	I-FRO 125-BW

